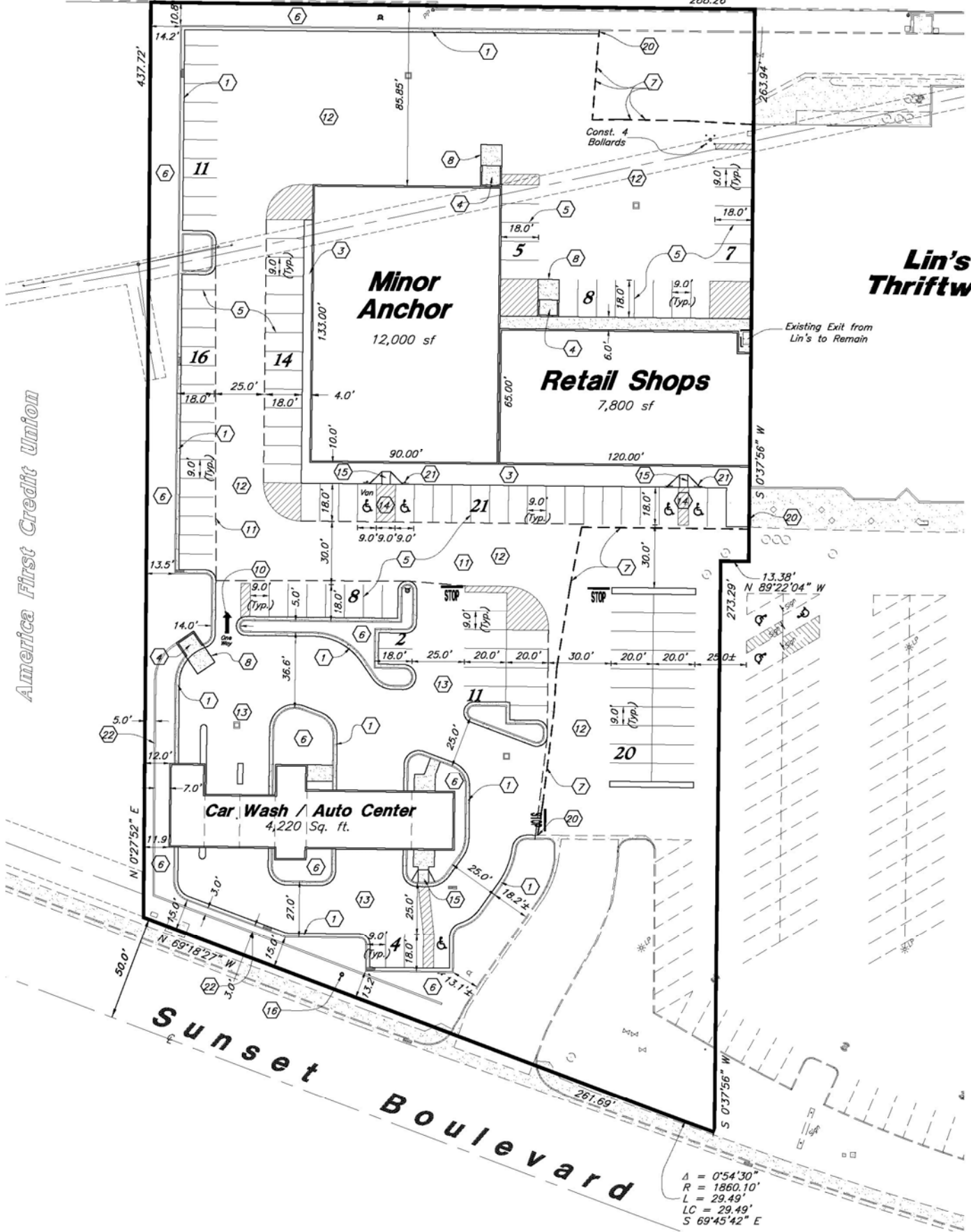


S 89°20'18" E

288.26'



Lin's Thriftway

Existing Exit from Lin's to Remain

America First Credit Union

Sunset Boulevard

$\Delta = 0^{\circ}54'30''$
 $R = 1860.10'$
 $L = 29.49'$
 $LC = 29.49'$
 $S 69^{\circ}45'42'' E$